

SOUTH GEORGIA EXPEDITION

Dec 30th 2028 – January 22nd 2029



Join this extremely unique 23 day expedition to explore the Falkland Islands, South Georgia & South Sandwich Islands! This trip includes diving, snorkeling, kayaking & landings with more than half a million penguins. It's truly a dream itinerary only found with us. Becky is partnering with Blue Green Expeditions and there will also be citizen science on this exclusive charter!

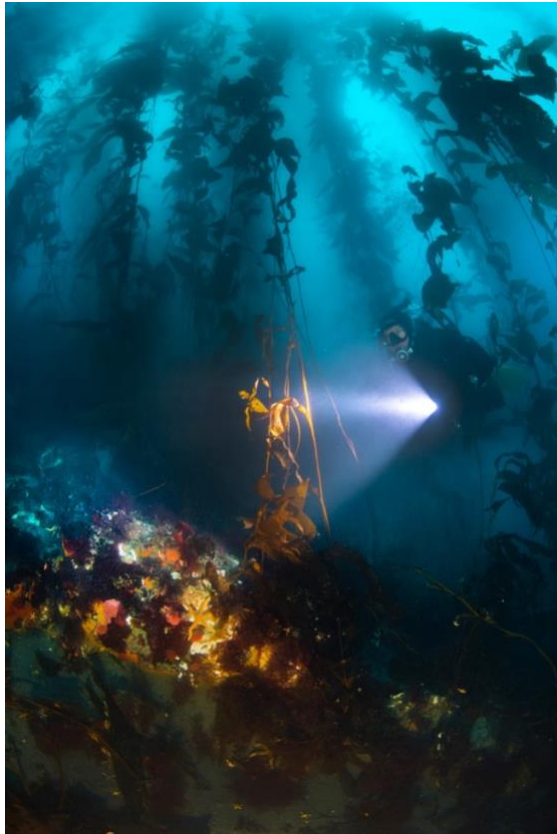
Let's end 2028 and bring in 2029 in one of the most wildlife dense areas on the planet. During this time of year the photography possibilities are endless between elephant seals fighting and

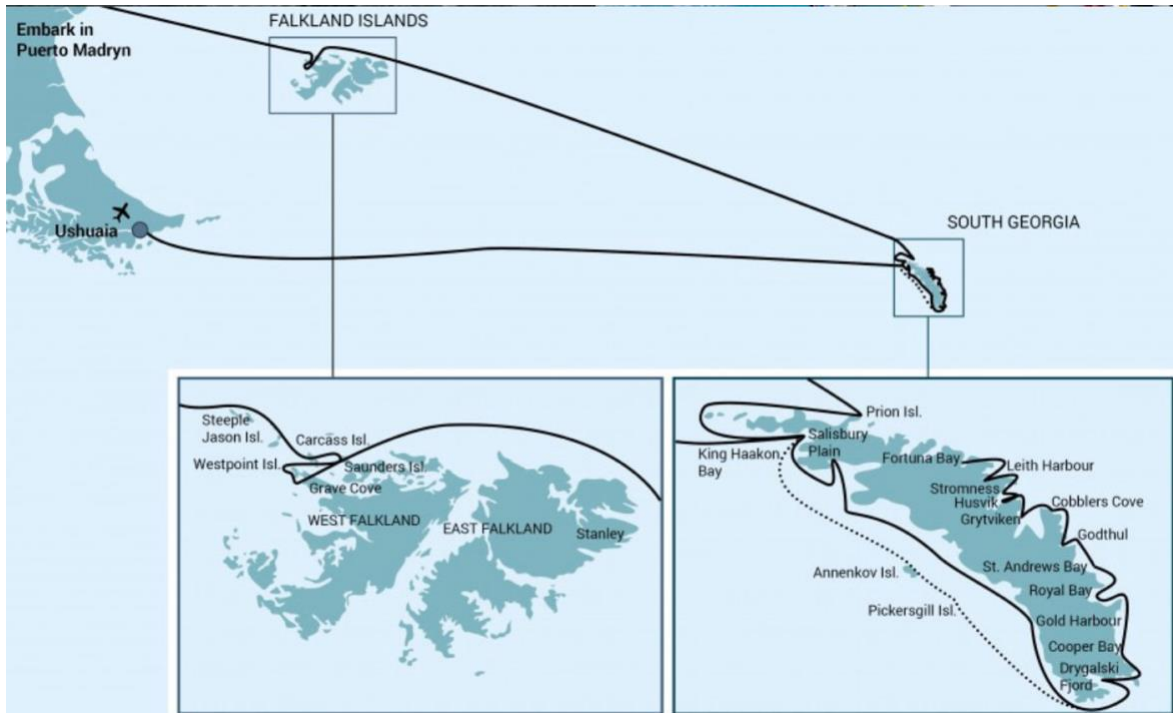
newborns, fur seals, albatross and several species of penguins including King Penguins & chicks, Rockhopper, Macaroni, Gentoo, Magellanic and the largest colony on the planet of 2 million Chinstrap penguins in the South Sandwich Islands! This trip is penguin overload!



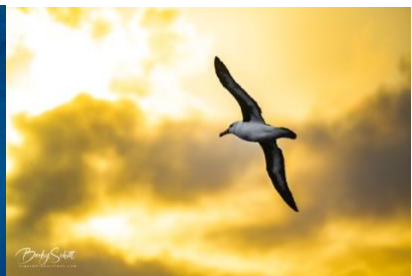


Falkland Islands and South Georgia to see the world's largest black-browed albatross colony along with the largest breeding locations for King penguins and elephant seals! Few places compare to South Georgia in terms of exotic wildlife and jaw dropping scenery, and the Falklands are no different. On this exploratory voyage you can enjoy both. This is also a diving trip! See amazing kelp forests, death stars, seals and sub-Antarctic marine life! Everywhere you look there is wildlife from in the water to land. We plan to visit some of the best locations such as Gold Harbor, St. Andrews Bay and Salisbury plain along with Grytviken a former whaling station taken over by wildlife. Visit famous polar explorer Ernest Shackelton's grave and feel polar history come alive. Join us on this magnificent trip and set foot in an otherworldly place.





We will go much further south than what shows on the above map to the South Sandwich Islands that are barely explored.





Trip Includes:

- 1 night hotel stay in Ushuaia prior to embarkation
- 23 days aboard Ortelius – Full boat charter our group only!
- Specialized itinerary including South Sandwich Islands very rarely visited or dived
- All meals aboard
- All shore excursions, program lectures and experienced expedition staff
- Diving for qualified participants
- Snorkeling for those interested (includes drysuit for snorkelers only)
- Participation in citizen science project led by scientists
- Use of Rubber boots
- All transfers to and from ship

Not Included:

- International and Domestic flights to and from Ushuaia (USH)
- Meals ashore
- Gratuities
- Fuel Surcharges
- Alcohol and bar charges
- Travel insurance covering medical evacuation required
- Dive insurance for snorkeling and divers
- Trip cancellation insurance highly recommended

PRICING

\$24,000 p/p Quad Porthole

\$ 28,000 p/p Twin Porthole

\$29,500 p/p Twin Window

\$ 32,000 p/p Twin Deluxe

\$ 36,000 p/p Superior

Payment Schedule

Non-refundable deposit \$5000 deposit upon signing up

2nd Payment \$5000 due Jan, 15, 2027

3rd Payment \$5000 due Nov 15, 2027

Balance due Aug, 15, 2028

All prices shown in US dollars per person and based on double occupancy (4 in quad).

**Contact Becky Schott Becky@LiquidProductions.com +1 (813) 453-4769
for more info or to sign up!**

Some of the locations we plan to visit :

Falklands

The Falkland Islands offer an abundance of wildlife that is easily approachable, though caution is always advised. These islands are largely unknown gems with a wealth of bird life, including many endemic species. The waters of the Falklands are also rich with sea life, including southern sea lions and elephant seals. There is a good chance to see both Peale's dolphins and Commerson's dolphins.

During this segment of the voyage, we aim to visit the following two sites:

Steeple Jason – Home to the world's largest black-browed albatross colony (roughly 113,000), Steeple Jason is a wild and rarely visited island buffeted by wind and waves. Weather and swell conditions dictate the journey here.

Carcass Island – Despite its name, this island is pleasantly rodent-free and hence bounteous with birdlife and many endemic species. Anything from breeding Magellanic penguins and gentoos to numerous waders and passerine birds (including Cobb's wrens and tussock-birds) live here.

Other sites that we may offer as an alternative:

Saunders Island – On Saunders Island, you can see the black-browed albatross and its sometimes-clumsy landings, along with breeding imperial shags and rockhopper penguins. King penguins, Magellanic penguins, and gentoos are also found here.

West Point Island – Landing in a small cove near the island's house, you will be able to walk through the tussock grass and an abundant breeding colony of black-browed albatrosses, where they live side by side with rockhopper penguins.

Grave Cove – Nesting gentoo penguins and excellent hiking opportunities abound here, with the chance to enjoy great scenery and wildlife.

South Georgia

In our tour of South Georgia's breathtaking wildlife and scenery, we may visit the following sites. Please keep in mind that weather conditions in this area can be challenging, largely dictating the program.

Sites you might visit include:

Prion Island – The home of the great wandering albatrosses. The previous summer's wandering albatross chicks are almost ready to fledge, and adults are seeking out their old partners after a year and a half at sea.

Salisbury Plain, St. Andrews Bay, Gold Harbour – These sites not only house the three largest king penguin colonies in South Georgia, they're also three of the world's largest breeding beaches for southern elephant seals. Only during this time of year do they peak in their breeding cycle. Watch the four-ton bulls keep a constant vigil (and occasionally fight) over territories where dozens of females have just given birth or are about to deliver. You can also see a substantial number of Antarctic fur seals here during the breeding season (December – January).

Fortuna Bay – This beautiful outwash plain from Fortuna Glacier is home to a large number of king penguins and seals. You may have the chance to follow the final leg of Shackleton's route to the abandoned whaling village of Stromness. This path cuts across the mountain pass beyond Shackleton's Waterfall, and as the terrain is partly swampy, be prepared to cross a few small streams.

Leith Harbour, Stromness, Husvik – These sites remind us of the scale of the whaling industry in the early 20th century. Elephant and fur seals breed and moult here. Gentoo penguins also occupy the landing sites. Antarctic prions and South Georgia dive petrels may be observed, especially in the area of Husvik.

Grytviken – In this abandoned whaling station, king penguins walk the streets and elephant seals lie around like they own the place – because they basically do. Here you might be able to see the South Georgia Museum as well as Shackleton's grave.

Cobblers Cove, Godthul – Here we will try to visit Rookery Point to see macaroni penguins. We might also encounter giant petrels, gentoo penguins, seals, and light-mantled sooty albatrosses nesting along the coastline. Godthul (Norwegian for "good cove") was named by Norwegian whalers and seal hunters.

Royal Bay (Moltke Harbour, Will Point, & Brisbane Point) – Moltke Harbour in Royal Bay was named by the German International Polar Year Expedition in 1882, and some of the remains of their dwellings are still visible. The scenery of Royal Bay is amazing, with dark sandy beaches, green tussocks, and of course, the great Ross Glacier. It may be windy here, but the Zodiac cruising is spectacular. Roughly 30,000 pairs of king penguins also live in this area.

Cooper Bay – A Zodiac cruise in Cooper Bay offers a good chance to see macaroni penguins, gentoo penguins, and one of the world's largest chinstrap penguin rookeries. Fur and elephant seals may be seen on the beach, while we might also spot light-mantled sooty albatrosses gliding overhead. Antarctic terns, white-chinned petrels, and blue-eyed shags are possible here too.

Drygalski Fjord – This narrow waterway offers spectacular landscapes, specifically high mountain peaks at a very close distance.

Annenkov Island – Passing Pickersgill Islands, we reach the rarely visited Annenkov Island, first discovered by James Cook in 1775 and later renamed by the Russian expedition of Fabian von Bellingshausen in 1819. This is a rocky terrain with a variety of ridges, peaks, and hills where fossils have been found.

King Haakon Bay – Few Antarctic locations are more steeped in expedition history than this one. British explorer Ernest Shackleton reached King Haakon Bay during his arduous open boat voyage from Elephant Island, where his crew was stranded after sea ice crushed their ship. Elephant seals dominate these rugged beaches, and birdwatchers should keep a lookout for South Georgia pipits, Antarctic prions, common diving petrels, and blue petrels.

South Sandwich Islands

Few ever visit this chain of volcanic islands and even fewer people have dived here. Becky was lucky enough to dive here with the group in 2025 and it was pristine. Surrounded by millions of chinstrap penguins on the shoreline and the steep volcano made this area look otherworldly. We may not be able to land here but permits are in the works. Why can't we land? There are just too many penguins to even get off the zodiacs! We will be diving, snorkeling, zodiac cruising and kayaking is offered. There is always the possibility of discovering new species here. It's so rarely visited by people and not much diving or science has been done in this location!

We plan to **spend 4 days exploring** the various islands of Thule and Cook Islands along with a few others. This will be a highlight of the trip. There are also large **icebergs** in this area, kelp covered walls and so much explore! There are also a lot of whales in the area and Adelie penguins and albatross.











Becky Schott
LiquidProductions.com